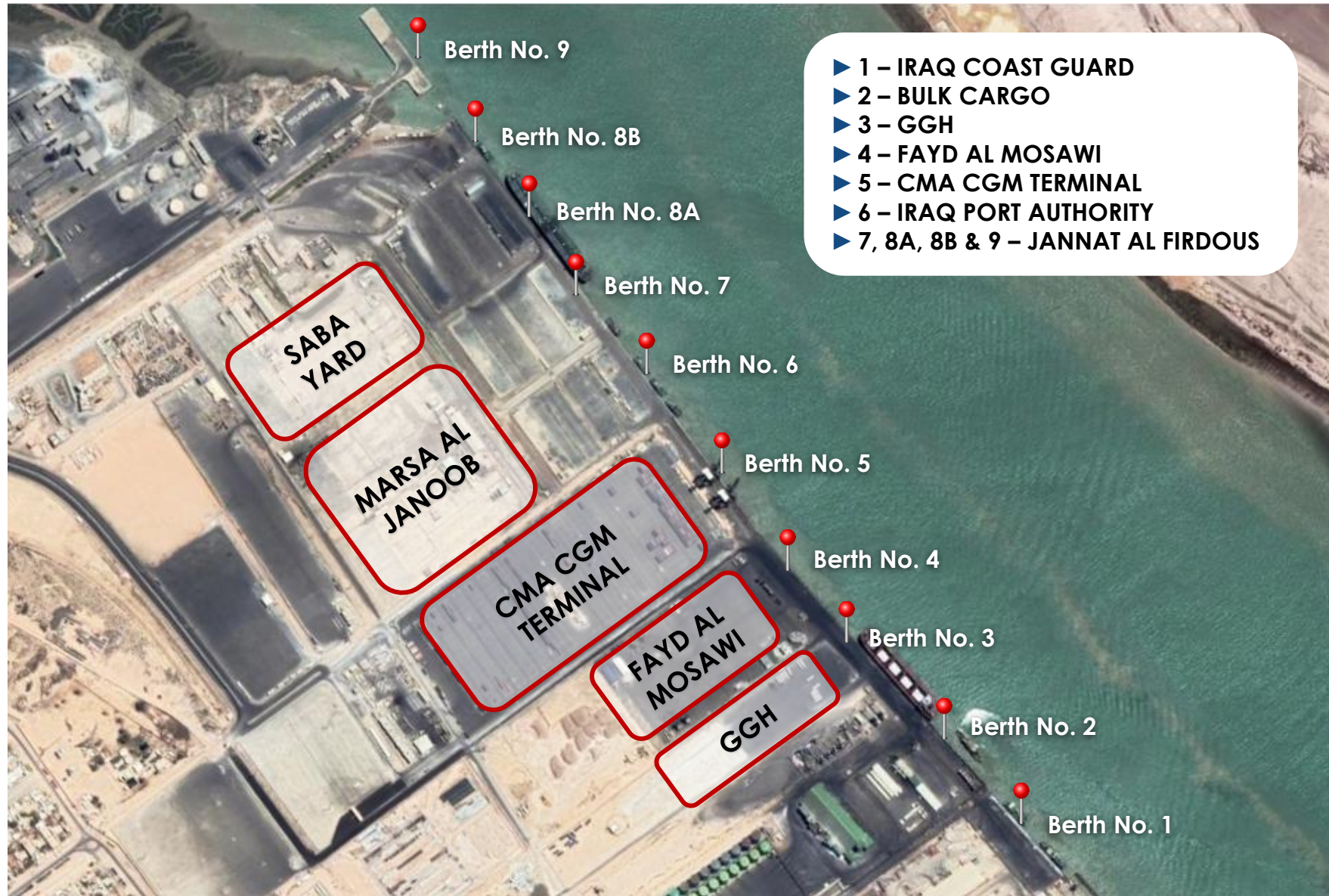


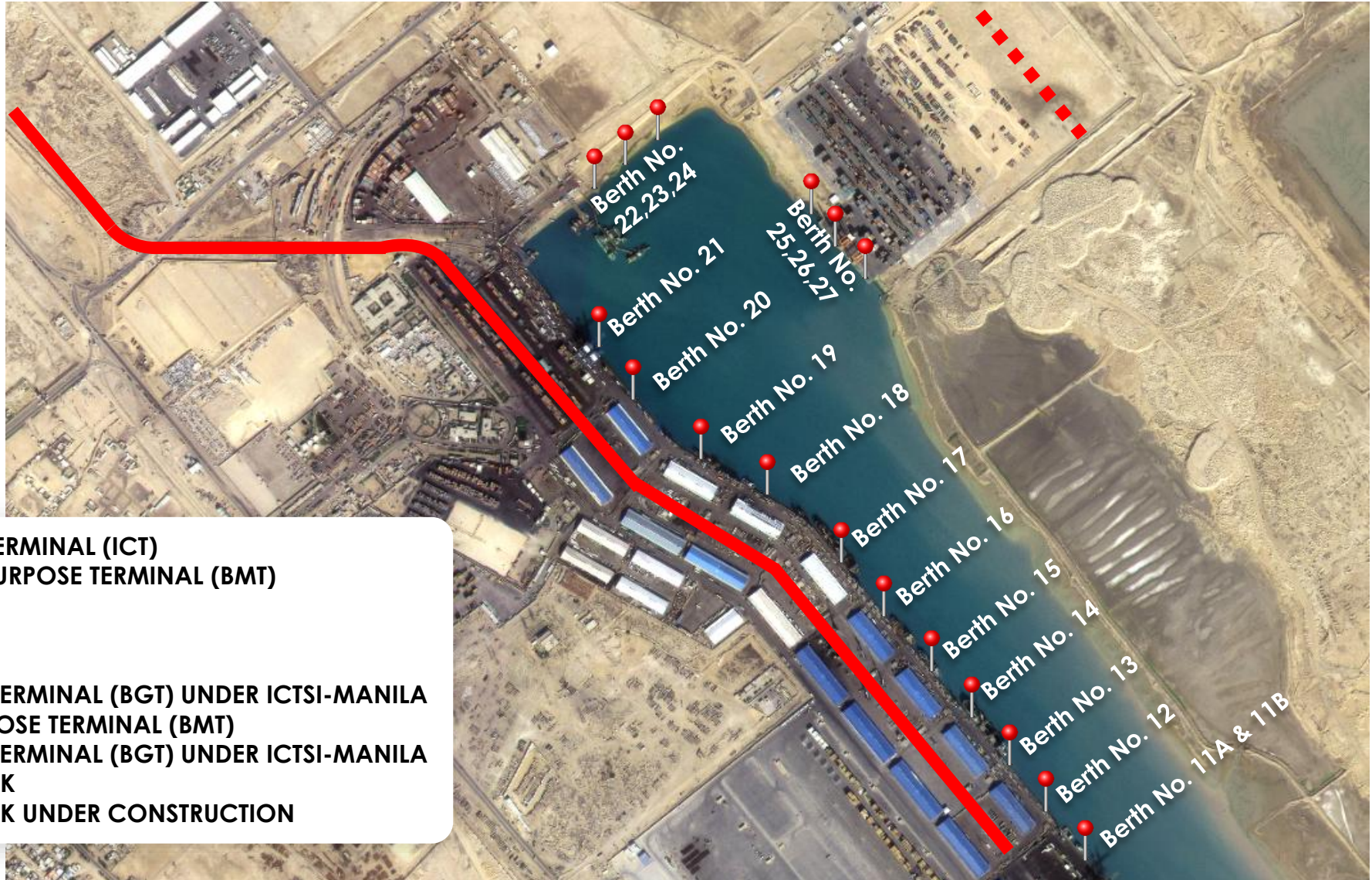
# UMM QASR PORT & TERMINALS INFORMATION

# SOUTH PORT BERTHS AND YARD OVERVIEW





# NORTH PORT BERTHS AND YARD OVERVIEW



- ▶ 11A + 11B – IRAQ CONTAINER TERMINAL (ICT)
- ▶ 12, 13, 14 & 15 – BASRA MULTI PURPOSE TERMINAL (BMT)
- ▶ 16 – MARTRADE TERMINAL
- ▶ 17 – JANNAT AL FIRDOUS
- ▶ 18 – BAHA BAGHDAD
- ▶ 19, 20 & 21 – BASRA GATEWAY TERMINAL (BGT) UNDER ICTSI-MANILA
- ▶ 22, 23 & 24 – BASRA MULTI PURPOSE TERMINAL (BMT)
- ▶ 25, 26 & 27 – BASRA GATEWAY TERMINAL (BGT) UNDER ICTSI-MANILA
- ▶ ——— – RAILWAY TRACK
- ▶ - - - - - – RAILWAY TRACK UNDER CONSTRUCTION

# UMM QASR CONTAINER TERMINALS AND SPECIFICATIONS

DETAILS	ICT	BMT	BGT	BGT	CMA-CGM (CCTI)
	Iraq Container Terminal	Basra Multipurpose Terminal	Basra Gateway Terminal	Basra Gateway Terminal	
OPERATOR	GulfTainer	Al-Loreen /MSC	International Container Terminal Services Philippine (ICTSI)	International Container Terminal Services Philippine (ICTSI)	CMA-CGM
PORT NAME	North Port				South Port
BERTH NO	11A + 11B	14 & 15	20 ( <a href="#">IQUQRBGT20</a> )	27 ( <a href="#">IQUQRBGT27</a> )	5
CHANNEL DISTANCE	34NM	34M	34NM	34NM	34NM
TIME FROM PSTN TO BERTH	5.5HRS	5.5HRS	5.5HRS	5.5HRS	5.5HRS
MAXIMUM DRAFT AT BERTH	10.5	10.6	10.5	10.5	9.5
LOA RESTRICTIONS	340	340	340	290	200
NUMBER OF QUEY	2	2	1	3	1
NO OF CRANES	2 X STS GANTRY 2 X MHC	3 X MHC	2 X STS GANTRY 2 X MHC	5 STS GANTRY	2 X STS GANTRY
PRODUCTIVITY /CRANE / HOUR	15-16 MOVES	15-16 MOVES	16-18 MOVES	18-20MOVES	15-16 MOVES
CONTROLLER OF TARIFF	IPA	IPA	IPA	IPA	IPA
	GULFTAINER	MISNAK	ICTSI	ICTSI	CMA-CGM
TERMINAL WORKING HRS	24 HRS	24HRS	24 HRS	24 HRS	24 HRS
BERTHING PROCESS	First Come First Served / Berthing window as agreed between terminals & Line <a href="#">Window berthing can be availed by direct negotiations with terminal operator</a>				First Come First Served / Berthing window as agreed between terminals & Line